



Leica Cyclone Hoja de datos

E-Spatial

Distribuidor autorizado
Leica Geosystems



Patricio Sanz No. 1513 Oficina 2,
Col. Del Valle, Ciudad de México
Alcaldía de Benito Juárez
C.P. 03100



55 8663 3093

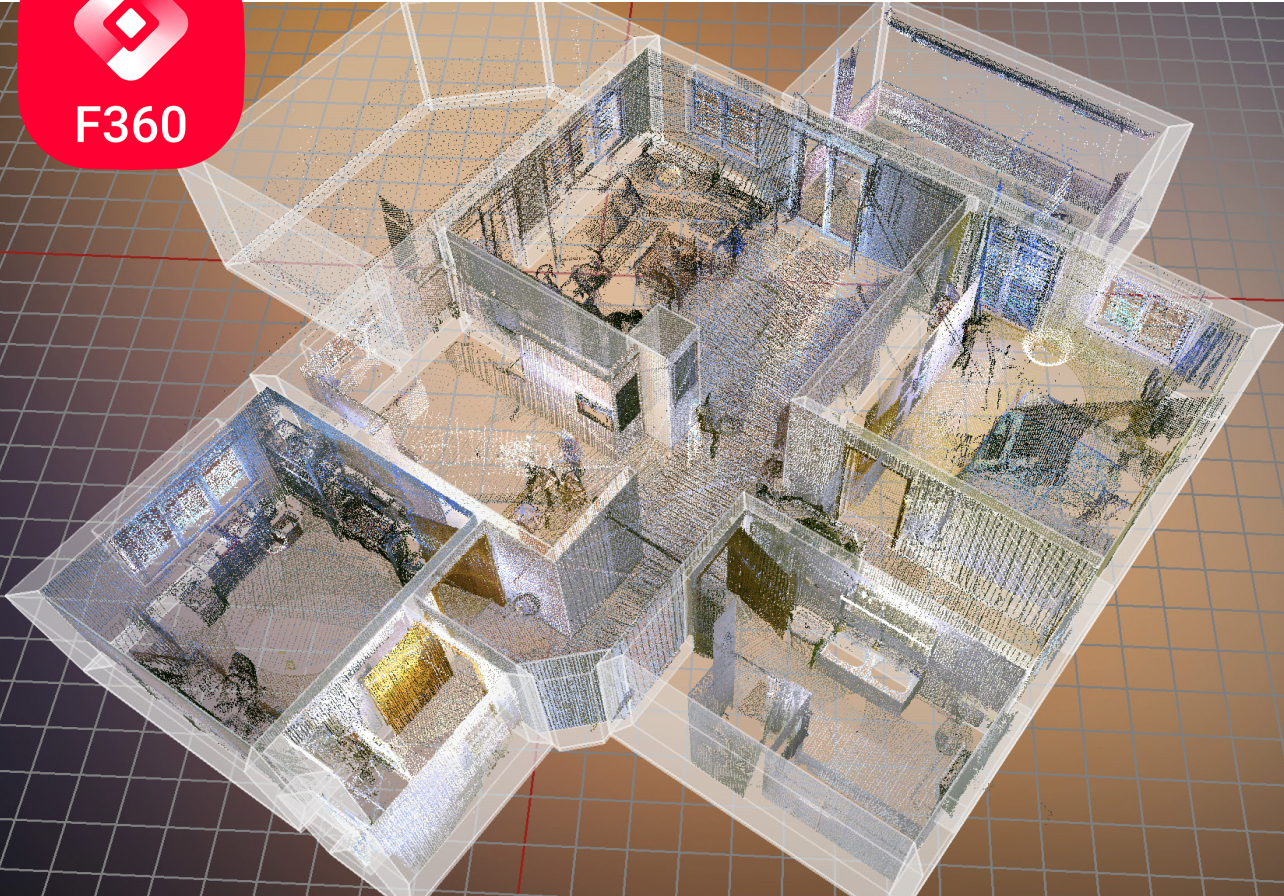


espatial@e-spatial.mx

www.e-spatial.mx

Leica Cyclone FIELD 360

View. Check. Add.



View

As part of Leica Geosystems' 3D reality capture solutions, the high-performance Leica Cyclone FIELD 360 mobile-device app is the perfect field companion for the BLK360, BLK2GO, BLK2GO PULSE, BLK ARC, RTC360 and ScanStation P-Series laser scanners. With its intuitive user interface, remote scanner control and on-site point cloud display, navigation is a breeze - even for novice users - with full imagery and point cloud data delivered directly to your tablet or smartphone using edge computing technology.



Check

Direct data access and visualisation are the foundation for quality control in the field; with Cyclone FIELD 360, pre-aligned point cloud data enables users to quickly conduct on-site quality control checks, improves productivity, and makes for better-informed decisions in the field. Directly publish your captured data from Cyclone FIELD 360 to TruView Cloud or Reality Cloud Studio, powered by HxDR to quickly exchange project information between the office and the field prior to import and registration.



Add

For improved registration in Leica Cyclone REGISTER 360 PLUS post-processing, and to add extra value and information to 3D data, Cyclone FIELD 360 enables on-site tagging of measurements, videos, images, text or voice files to the point cloud geometry simply by using your tablet or smartphone. Work smarter on-site with the Quick Plan add-on and built in floor-flatness analysis, enabling floor plan modelling, wall extraction, and more directly in the field.

leica-geosystems.com



- when it has to be **right**

Leica
Geosystems

Leica Cyclone FIELD 360 Product Specifications

GENERAL

iOS or Android app	In-the-field app for remote scanner control, data management, quality control, data tagging and in-field registration.
--------------------	--

SCANNER CONTROL

Remote scanner control with access to all control features
--

DATA MANAGEMENT

Create, edit and delete scan jobs

DATA COMMUNICATION & TRANSFER

Communication	Bi-directional wireless communication between scanner and tablet
Transfer	Automatic transfer of scan data from scanner to tablet; automatic synchronisation of all app created data from tablet to the scanner
Publishing to Reality Cloud Studio	Direct publishing for communication between in-field team members and office team members to quickly exchange project information prior to import and registration

QUALITY CONTROL

Point cloud navigation	Navigate single and registered point clouds in 2D map view, 360° panoramic view or in full 3D view. See Live Scanner Position (for VIS enabled scanners)
Point cloud display	Display point clouds in full HDR colour (RTC360 and BLK360), rainbow intensity or grey-scale mapping
Measurement	Take and tag measurements within the point cloud

DATA TAGGING

Add image, video, voice, text or any other file-based tags to point cloud and add 3D tags using the LiDAR sensor in compatible Apple devices.

IN-FIELD REGISTRATION

Alignment	Visual Inertial System (VIS) technology based automated alignment for targetless cloud-to-cloud registration. Move, rotate, or pre-align scan setups with visual alignment.
Optimise bundles	Create redundant links and close loops.
Georeferencing	Directly extract targets from RTC360 scans or use natural targets within the app to fit, align, and compute accurate transformations with real-world coordinates.

ADD-ONS

Quick Plan	Extract walls and define doors and windows to create floor plan models in IFC or DXF format
Floor Flatness and Floor Levelness Analysis (FF/FL)	Check floor flatness and levelness on construction sites, ready for fast remediation and reporting.

INTEROPERABILITY

Sensor hardware	Leica ScanStation P-Series, RTC360, BLK360, BLK ARC, BLK2GO, & BLK2GO PULSE
Built-in LiDAR sensor	Collect LiDAR data with compatible Apple devices.
Cyclone software	Leica Cyclone REGISTER 360 PLUS 2025.0.0 (or higher). Requires active Cyclone REGISTER 360 PLUS family or Cyclone FIELD 360 licence for activation.
RCS publish	Requires active Reality Cloud Studio account.

SYSTEM REQUIREMENTS

Android tablet or phone	Android 11.0 or higher on 64-bit ARM architecture with 64-bit operating system and 4GB+ of RAM.
Recommended Android devices	Samsung Galaxy Tab S8, Tab S9, Samsung Galaxy S23, S24 series.
Apple iPad or Apple iPhone	iOS16 or higher with 64-bit operating system and at least 4GB of RAM.
Recommended Apple devices	iPad Pro 11 (2021, 2022, 2023, 2024) and iPhone 13, 14, 15, 16 series. For first generation BLK360 scanners, iOS devices are recommended.

Leica Geosystems AG

Heinrich-Wild-Strasse
9435 Heerbrugg, Switzerland
+41 71 727 31 31



Leica ScanStation survey-grade, 3D laser scanner and Leica Cyclone FIELD 360 mobile-device app.



Leica RTC360 3D laser scanner with the Leica BLK360 imaging laser scanner and Leica Cyclone FIELD 360 mobile-device app.



Leica BLK2GO handheld imaging laser scanner and Leica Cyclone FIELD 360 mobile-device app.

Download from Google Play Store and Apple App Store.



All specifications are subject to change without notice.
iPhone and iPad are trademarks of Apple Inc.
Android is a trademark of Google.

Illustrations, descriptions and technical specifications are not binding and may change. All rights reserved. Printed in Switzerland – Copyright Leica Geosystems AG, Heerbrugg, Switzerland 2024. 872719en - 03.25.

- when it has to be **right**

Leica
Geosystems



E-Spatial S.A. de C.V.

Distribuidor autorizado
Leica Geosystems

www.e-spatial.mx